

JANUARY 2022
POCKET GUIDE

An Introduction to Biamp's Latest Innovations



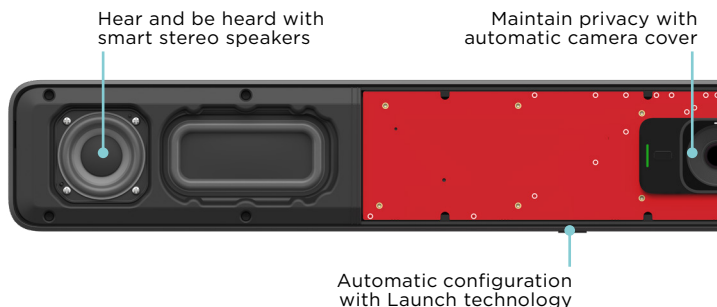
PARLÉ CONFERENCE BARS

Delivering extraordinary audiovisual experiences to small through medium sized conference rooms, our Parlé conferencing bars feature professional microphones and loudspeakers, with an optional 4K camera, in a convenient all-in-one form factor performance-optimized for conferencing.



PARLÉ VBC 2500 CONFERENCE VIDEO BAR

The Parlé VBC 2500 is an all-in-one conferencing bar that delivers premium AV experiences with a 27-microphone array and a wide angle 4K camera designed for conferencing environments. Biamp Beamtracking™ technology actively tracks and intelligently mixes conversations from around the room. Two smart speakers use distortion compensation and dynamic bass enhancement technology to create room filling audio with superior speech reproduction.



Hear and be heard with smart stereo speakers

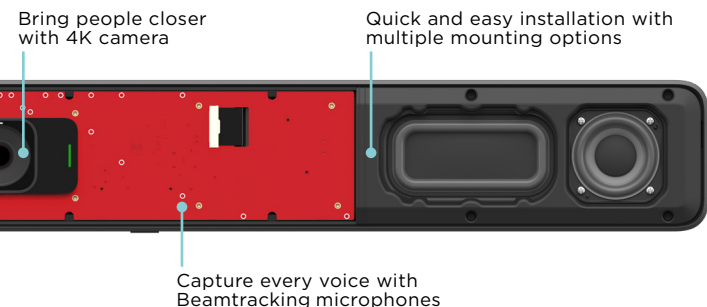
Maintain privacy with automatic camera cover

Automatic configuration with Launch technology

The 4K camera incorporates high quality optics to enable streaming crystal-clear video at 1080p @ 30fps. The VBC 2500 also offers auto framing technology to identify meeting participants and to adjust the focus and zoom to keep participants in view.

The VBC 2500 features Biamp Launch, an automated tuning system that optimizes the audio to each unique conference space.

- Beamtracking technology actively tracks and intelligently mixes conversations
- Deep learning noise reduction algorithm for clear voice reproduction
- Low distortion smart speakers
- Biamp Launch for one touch automatic room tuning
- LED indicators for mute status and camera activity
- Wide angle 4K camera that can stream 1080p @ 30fps
- Electronic Pan/Tilt/Zoom with 5x zoom
- Auto framing technology to keep participants in frame
- Automatic camera privacy shutter
- Table, wall, and display mount options available





PARLÉ ABC 2500 CONFERENCING AUDIO BAR

Parlé ABC 2500 is an all-in-one conferencing bar featuring a 27-element mic array and Biamp Beamtracking™ technology to actively track and intelligently mix conversations from around the room. Two smart speakers use distortion compensation and dynamic bass enhancement technology to create room filling audio with superior speech reproduction. The ABC 2500 also features Biamp Launch, an automated tuning system that optimizes the audio to each unique conference space.

- Beamtracking technology actively tracks and intelligently mixes conversations
- Deep learning noise reduction algorithm for clear voice reproduction
- Low distortion smart speakers
- Biamp Launch for one touch automatic room tuning
- LED indicators for mute status
- Table, wall, and display mount options available

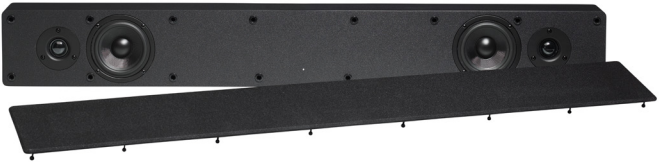




PARLÉ SBC 2 CONFERENCING SPEAKER BAR

The Parlé SBC 2 is a high-fidelity speaker bar for use with conferencing systems. Intended for huddle rooms or small conference rooms, the SBC 2 supports several different options for audio input and can be integrated with a control system through an RS-232 port. It has three built-in EQ presets (music, video conference, presentation) switchable on the back of the speaker bar to provide clear and precise audio in different application settings.

- Equipped with two 4" woofers and two 1" tweeters
- Four audio input options: HDMI ARC, USB, Euroblock, and RCA
- Can be integrated with a control system via RS-232
- Includes wake-on-signal capability
- 3 built-in EQ presets
- Table or wall mount options available



VIDI CONFERENCING CAMERAS

Designed to equip small and medium size conference rooms for exceptional video meetings, Vidi conferencing cameras feature a 4K camera and professional microphones designed for optimized conferencing. Vidi cameras are available in two models.

ALL MODELS FEATURE:

- 4K video quality
- 120° field of view with no distortion
- Built-in microphone array
- LED indicators for camera activity



AVAILABLE WITH VIDI 100:

- On-board signal processing for noise cancellation
- USB powered



AVAILABLE WITH VIDI 250:

- Electronic Pan/Tilt/Zoom with 5x zoom
- Auto framing technology keeps participants in frame
- Display mount and wall mount options



APPRIMO TOUCH PANELS

Offering enhanced flexibility in room control and nearly unlimited options in UI design, Apprimo touch panels make configuring, operating, and managing AV equipment in complex spaces easy.

TOUCH PANELS AVAILABLE IN THREE DIFFERENT MODELS:

- Apprimo Touch 4
- Apprimo Touch 7
- Apprimo Touch 10



KEY FEATURES

- Capacitive touch LCD interface
- Scratch-resistant glass
- Several UI design templates and themes available in Project Designer software
- Customizable user interface to fit customers' control requirements and corporate identity
- Fits standard single gang US, EU, and DK back boxes
- Screen turns on automatically as someone approaches
- Display brightness can adjust automatically to the ambient light level
- Magnetic wall plate for easy installation
- PoE powered (IEEE 802.3at Class 3, 15W) for simple, single CAT5e/CAT6 cable installation
- Firmware can be updated via mini USB port



APPRIMO TOUCH 8i CONTROL PANEL



The Apprimo Touch 8i is an 8" touchscreen control panel for any room requiring a more complex level of control, while still offering a stylish, discreet interface that fits any interior design.

The Apprimo Touch 8i is operated by an integrated Impera controller capable of controlling up to 20 IP-based devices, allowing you to customize a solution that perfectly matches the customer requirements. The user interface is fully configurable with Project Designer software, which includes several themes and customizable templates to choose from.

IMPERA CONTROL SYSTEMS

Comprised of control pads and touch panel controllers, the Impera product family enables powerful room control across a wide range of environments. The push-button simplicity of Impera control pads provide user-friendly interfaces for controlling technology in meeting rooms and learning spaces, while the touch panel controllers enable a fully customizable UI via Project Designer software to give users a clear, reliable starting point for presentations, lessons, and beyond.



IMPERA CONTROL PADS:

- Include on-board controllers; no external processor required
- Software-configurable via Project Designer software
- 4- and 8-button models available in EU, DK, US form factors
- Control devices via LAN, RS-232, IR, or GPIO
- Support email notifications for lamp/filter hours, error codes, and other warnings



IMPERA TOUCH PANEL CONTROLLERS:

- Serve as controllers for Apprimo touch panels
- Software-configurable via Project Designer software
- Multiple control options available: LAN, RS-232, IR, or GPIO
- Include built-in assignable relays
- Broad offering of capabilities to match a variety of room requirements

DEVIO SCR-10



Designed to enable powerful video conferencing in smaller rooms, Devio SCR-10 makes connecting to conferencing cameras and bars with a single USB connection easy.

KEY FEATURES

- Works with PCs running conferencing solutions, including Microsoft Teams, Zoom, BlueJeans, Google Meet, and many more
- Supports both Windows and Mac PCs, and uses standard audio drivers
- Single cable solution (USB) for BYOD
- Supports connections for up to three USB and two analog peripheral devices
- Includes support for CEC and wake-on-signal technology to turn connected peripheral devices on/off based on device signal detection

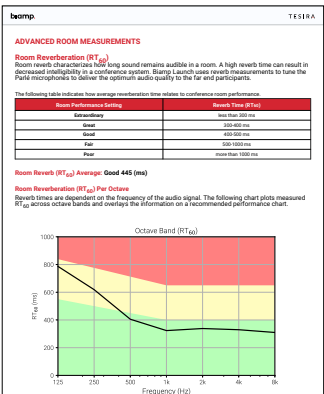
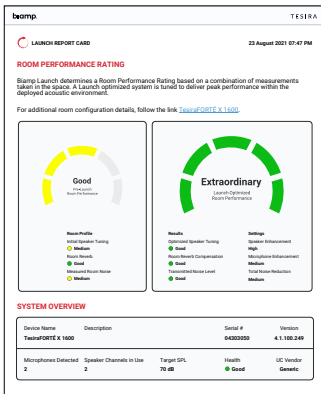
LAUNCH 2.0



Launch is Biamp's automatic device discovery and tuning feature that optimizes audiovisual equipment at the touch of a button. Launch 2.0 adds new features designed to enhance the user experience, utilizes more peripherals during the process, and provides quick and easy access to Launch results.

NEW FOR LAUNCH 2.0:

- Microphone LED indicates Launch is in process
- LED cycle indicates microphone is actively testing
- Audibly indicates pre-and-post Launch room grade



Launch 2.0 is currently included in TesiraFORTÉ X and Devio SCX.

DESONO DX LOUDSPEAKERS

Featuring the same great acoustic performance for which they are known, our D Series loudspeakers have been redesigned to better align with the rest of the Desono line with enhanced aesthetics, mounting features, and improved overall installation experience.



DX CEILING LOUDSPEAKERS

- True coaxial loudspeakers with HF compression drivers
- Highest sensitivity in the price category, allowing smaller amplifiers for equivalent SPL
- Wide, smooth dispersion—consistent listening experience throughout any space
- Edgeless, magnetic grille design
- Shallowest “standard” back cans in the market—fits tighter ceiling spaces than competitors
- New SpringLock Clamps automatically support the speaker once placed through the ceiling cutout and can be preset to accommodate thickness of any ceiling
- Extra-long grip range accommodates thick ceilings
- Maintains tool-free tile rail & c-ring installation
- UL2043 & UL1480A certified



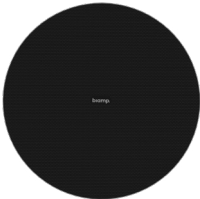
DX SURFACE MOUNT LOUDSPEAKERS

- Two-way design, HF compression drivers
- High sensitivity and low distortion
- Matched voicing with DX Ceiling Loudspeakers
- Designed for applications where SPL & speech intelligibility are the highest priority
- Outdoor ready and indoor-elegant
- Impact-resistant polymer cabinets
- Marine-grade aluminum grilles
- 316 stainless steel and brass external hardware
- Available in black and white finishes
- Included CMX ClickMount pan-tilt mounting bracket
- Marine-grade aluminum U-Bracket accessory available
- IP54 rated
- UL1480A certified

DESONO ACCESSORIES

Sophisticated new accessories for all of our Desono ceiling loudspeakers ensure easy, consistent installation experiences, regardless of application.

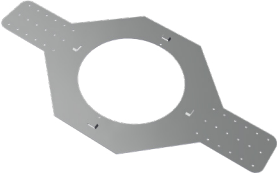
The suite includes new construction brackets, installation trim rings, black grilles, 48" tile rails, and high humidity grilles, implicit support for City of Chicago regulatory compliance and making Desono ready for any design challenge.



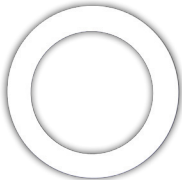
Black Grilles



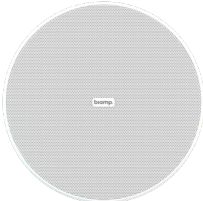
48" Tile Rails



New Construction Brackets

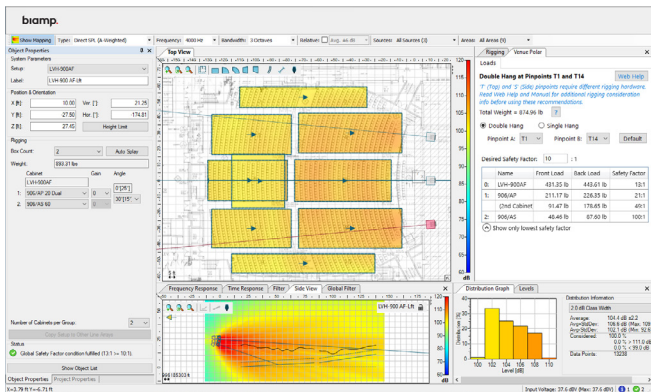


Trim Rings



High Humidity Grilles

VENUEPOLAR FOR LVH-900



Our latest version of VenuePolar, a custom plugin for EASE® Focus 3, extends ease of design to LVH-900 loudspeaker installations, allowing system designers to create larger custom arrays while streamlining the process. Integration with FIRmaker filter optimization makes it easy for LVH-900 to replace competing line arrays in any application.

KEY FEATURES

- Automatic calculation of quantity of speakers required
- Automatic calculation of optimal vertical coverage patterns for each speaker
- Automatic calculation of inter-cabinet splay angles and overall array aiming angle
- FIRmaker array optimization ensures smooth, uniform coverage of all audience areas
- Create reports with detailed information for each audience zone, sound sources for each array, and more

USB 200



Supporting both USB 2.0 and 3.0, the USB 200 adds BYOD flexibility to dedicated video conferencing rooms, allowing easy switching of a device between two host computers. Equipped with automated priority switching when a second computer is connected (BYOD) or the source can be changed manually via an external control system, the USB 200 features a two second power switch delay when switching between computers to ensure a stable and reliable re-connection of the device.

KEY FEATURES

- Allows easy switching between an in-room computer and a laptop
- Supports both USB 2.0 and USB 3.0
- Configurable automatic priority switching when second computer is connected
- Manual switching via third party control system supported
- Power switch delay cuts power for 2 seconds when switching between computers
- Built-in USB extender extends USB 2.0 cable lengths to up to 17 feet (5m) and USB 3.0 cable lengths up to 10 feet (3m) on each side of the switch

RMX 100 RACK MOUNT

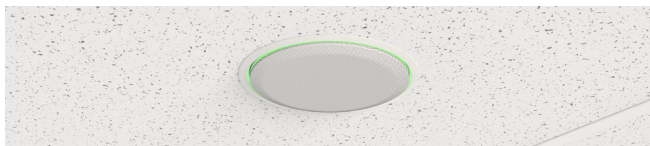


This new rack mount kit is specially tailored for Tesira conferencing products and supports side-by-side mounting of two units.

KEY FEATURES

- Supports Tesira conferencing devices:
 - TesiraFORTÉ X
 - Devio SCX
 - TesiraCONNECT
 - Power supply
- Any combination of two supported devices can be mounted side by side
- Easy and quick installation
- Includes tie wraps for universal mounting
- Provides necessary air flow for cooling
- Thick gauge cold-rolled steel with clean black finish

PARLÉ TCM-X FLUSH MOUNT KIT



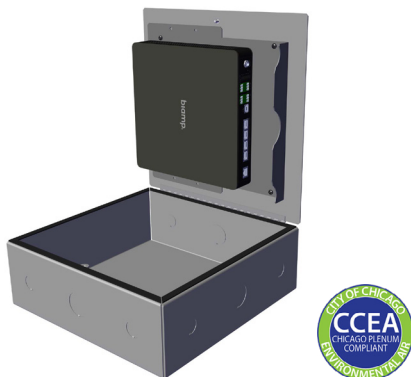
Simple and quick to install, our new Parlé TCM-X mount installs the microphone flush with the ceiling, allowing for an even smaller visual footprint.

KEY FEATURES

- Flush mount microphone with ceiling
- Works on tile or drywall
- Plenum-rated for air handling spaces
- See microphone mute status with wide 130° LED viewing angle
- Included optional recess spacer maximizes LED viewing angle to 170°
- Supports the tile bridge and seismic cable
- Available in black or white



UNIVERSAL PLENUM BOX



Install Biamp conferencing products in the ceiling or in the wall with our new Universal Plenum Box. The Plenum Box is CCEA certified, making all Biamp conferencing solutions Chicago Plenum Compliant.

KEY FEATURES

- 12 x 12 plenum-rated box for ceilings and walls
- Supports range of Biamp conferencing solutions:
 - TesiraFORTÉ X
 - Devio SCX
 - TesiraCONNECT
 - Parle TCM
 - Tesira AMP
- 9 different hole locations for wiring flexibility
- Thumb screw lock makes it easy to close in cramped spaces
- Laser edged knock outs for plenum compatibility

biamp.

To learn more about the products in the Biamp pocket guide, scan the code below.



CONTACT US:

**9300 S.W. Gemini Dr.
Beaverton, OR 97008
USA**

**E: biampinfo@biamp.com
W: biamp.com**

**1.800.826.1457
+ 1.503.641.7287**

